

Access controlled... Future secured.



SlimLane

SECURITY ENTRANCE LANES

AUTOMATIC
SYSTEMS
L&R GROUP

PEDESTRIAN



//SlimLane

Featuring a streamlined design, SlimLane's double swing door security entrance lanes combine high throughput with advanced user protection while providing a minimal footprint.

AESTHETICS

- Transparent and elegant design that blends seamlessly into any type of architecture
- Minimal footprint for maximum throughput
- Discreetly and ergonomically integrated card reader
- Precise pictograms for intuitive use and increased throughput
- Top quality assembly and finish

SAFETY

- Dynamic, electronic user protection based on traffic direction
- 'EGRESS' operating mode meets the highest fire safety standards
- In the event of a power outage, the obstacles will breakaway manually with minimal force or will open automatically with the optional battery backup
- Designed to prevent finger entrapment and other impacts
- Precision controlled tempered glass obstacles

SECURITY

- High-performance detection system based on a matrix of infrared beams preventing unauthorised use
- Fast double swinging doors for immediate lane closure (< 1 sec.)
- Electromechanical locking to withstand forced entry attempts
- Audio and visual signals to indicate unauthorised usage



CUSTOMISATION

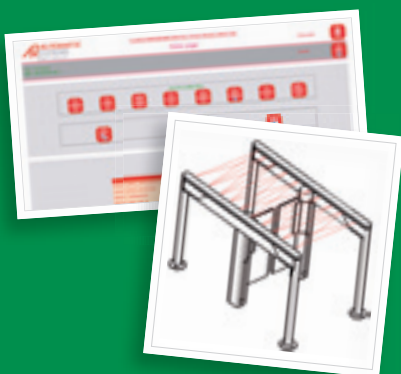
- An embedded Web server provides a wide range of customisable parameters to meet your specific operational needs
- Combination of compact, standard and wide lanes for custom-configured installation
- Adapts to your architectural style and technical environment
- Wide selection of options and accessories

RELIABILITY & PERFORMANCE

- High throughput: up to 60 users/minute
- Robust design
- Long life cycle, low maintenance costs
- Fourth generation of security entrance lanes based on 40 years of experience and over 90 million daily users

SlimLane, smart and functional

- Throughput management application runs on an open source operating system (Linux) and an embedded Web server
- High processing capacity (ARM9) and high-density matrix of infrared beams for dynamic, predictive tracking of users
- Intuitive maintenance interface offering real-time monitoring and the ability to configure and maintain every lane locally or remotely via a simple Web browser
- Complete connector technology with standard IP and USB connectors
- Auto failure monitoring and automatic lane reconfiguration mechanism for increased service time



SECURITY ENTRANCE LANES

STANDARD PASSAGEWAY

Lane width: 600 mm (23 ⁵/₈")



SlimLane 940 with a compact footprint
Overall dimensions*: 1640 x 1000 mm
(64 ¹/₂" x 39 ³/₄")

WIDE PASSAGEWAY



Lane width: 900 mm (35 ³/₇")



SlimLane 950 with a compact footprint
Overall dimensions*: 1640 x 1300 mm
(64 ¹/₂" x 51 ³/₁₆")

The Twin SlimLane version offers one or two independent compact lanes with a minimal footprint, suitable in even the most restricted installation spaces. Being a modular product, the SlimLane Twin can be installed as a single or a multi-lane array and can also be combined with the SlimLane 940 standard lane model and the SlimLane 950 wide lane model.

SINGLE COMPACT PASSAGEWAY

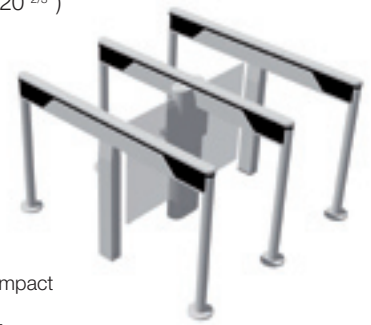
Lane width: 525 mm (20 ²/₃")



SlimLane 944 with very compact footprint
Overall dimensions*: 1640 x 832 mm
(64 ¹/₂" x 32 ³/₄")

DUAL COMPACT PASSAGEWAY

Lane width: 2 x 525 mm (2 x 20 ²/₃")



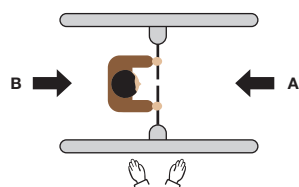
SlimLane 945 Twin with very compact footprint
Overall dimensions*: 1640 x 1515 mm
(64 ¹/₂" x 59 ²/₃")

* Single lane (L x W)

Two operating modes

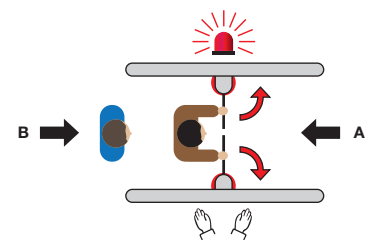
'SECURI-SAFE' mode focused on security (standard)

- Electromechanical locking of obstacles in case of a forced entry attempt in direction A or B



'EGRESS' mode compliant with the highest fire safety standards (option)

- In case of emergency, the obstacles can be unlocked with a simple push to automatically open in the direction of egress (direction B)
- Audio and visual alarms to signal evacuation in progress
- Returns to prior operating mode (programmable timer)



BENEFITS

- Automation of pedestrian access control
- Restricts access to secured zones
- Employee and visitor Entry/Exit tracking
- Reduced need for manned entrance
- Meets fire safety standards

MARKETS

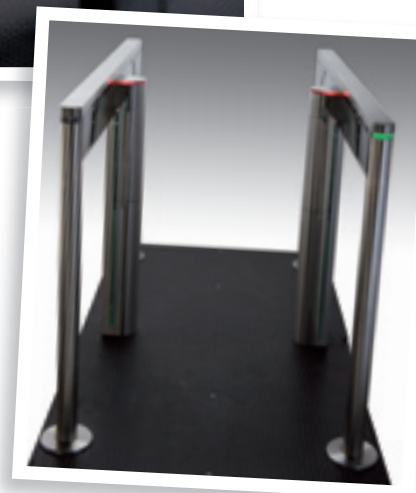
- Banks and insurance companies
- Government buildings and institutions
- Office buildings, head offices and administrative sites
- Schools, universities and colleges

OPTIONS & ACCESSORIES

Choose from our range of options and accessories to customise the design, safety level and control of your SlimLane.

SECURITY & SAFETY

- Enhanced electronic protection of luggage
- 'EGRESS' operating mode
- Battery backup for automatic opening in case of power failure, with a mechanism to lock obstacles in the direction of egress



AESTHETICS & CUSTOMISATION

- Transparent glass side panels
- Customisable equipment perfectly harmonising with your architectural style
- Customised glass obstacle with pattern or logo
- Fixing frame
- Podium

CONTROL & COMMAND

- Smooth integration of proximity, magnetic card readers, biometric scanners, and other user authentication systems
- Smart n' Slim monitoring panel for remote management of security entrance lanes

