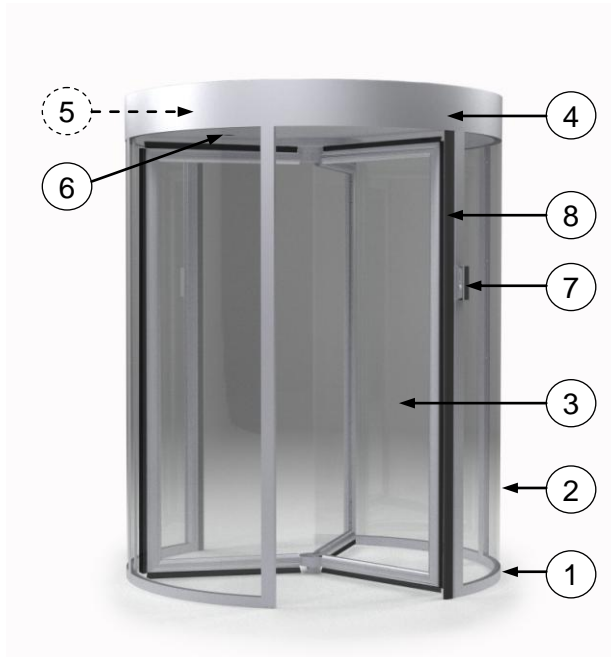


DESCRIPTION



1. Painted steel **Frame**, thickness 2 mm, high stiffness.
2. **Side panels** in painted steel and laminated glass BR2/S P6B thickness 20/21 mm.
3. **Mobile obstacles** in laminated clear glass P3A, 11/12 mm thick. Each panel is equipped with brushes for waterproofing.
4. **Upper steel painted casing** containing the device of motorization and the control board of the security door.
5. **Control logic and motorization** comprising:
 - an electronic programmable board;
 - connections terminals with RS485 interface port;
 - a 24 V DC power supply;
 - a 24 V DC engine managed by electronic card providing rapid movements with progressive slowdowns at the end of cycle;
 - a programming and control console;
 - back-up batteries (2) providing approximately 100 cycles in case of power failure;
 - a system for unlocking the obstacles in case of power failure (after discharge of back-up battery).
6. **LED lights** (3) providing the lighting of the zone of passage in the security door.
7. **Function pictograms** (option): red and green LED displays informing of the state of the security door.
8. **Anti pinch bumpers** ensuring the safety of the users.

The revolving security doors of the **RevLock** range are designed to ensure a secure access control and management of the pedestrian flows.

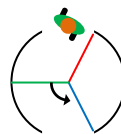
Resulting of more than 20 years experience, their design and their robust realization destined them specifically to the access of the works of prestige such as office buildings, airports, laboratories, libraries.

Consisting of a chassis, a painted steel housing and glass panels, the revolving security doors of the **RevLock** range provide good thermal insulation and a high visibility in their surrounding environment.

The revolving security doors of safety of the RevLock range are motorized and bidirectional.

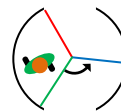
The revolving security door **RevLock 600** is equipped with 3 doors at 120° and offers a free passage of **750 mm** and an external diameter of **1800 mm**.

OPERATING MODE



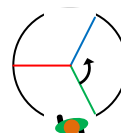
Step 1:

- Access is authorized.
- The mobile obstacles turn counterclockwise.
- The user presence is detected inside the door.



Step 2:

- The presence of an unauthorized user is detected (option).
- The presence of more than 1 user is detected (option).
- In case of fraud, the obstacles turn clockwise to exit the user(s).



Step 3:

- The user goes out.
- The obstacles are locked.

SURFACE TREATMENT

All the mechanical parts are treated against corrosion by electro zinc, according to RoHS norms.

RAL coating choice (structured paint):

RAL3020 Red - RAL7001 Grey - RAL9005 Black

RAL5010 Blue - RAL6024 Green - RAL9010 White

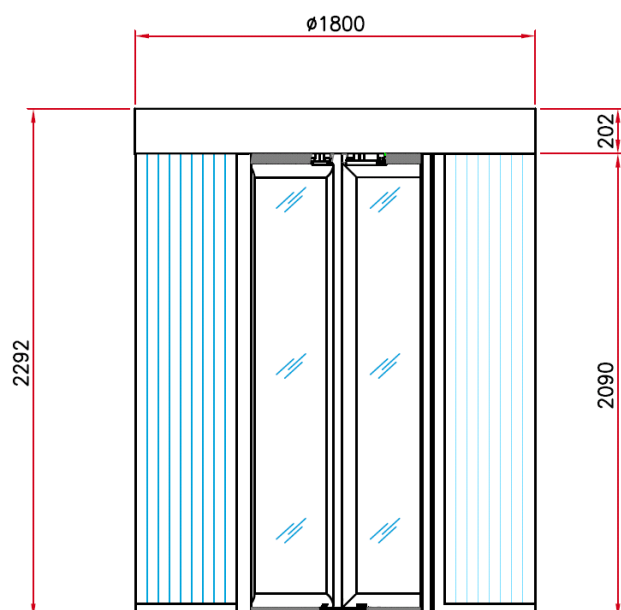
STANDARD TECHNICAL CHARACTERISTICS

Power supply	230V single phase; 50/60 Hz; 10 A + ground.
Geared motor	120 W - 24 VDC
Torque limiter	electronic
Speed adjustment	programmable
Passages (out of action time of the access control device)	15 users/minute/1 direction 30 users/minute/2 directions
Power consumption	100 W
Weight	850 à 950 kg, depending on glasses
Operating t°	-10° to + 45° C
Max relative humidity	90%, without condensation
Protection index	IP33 (with optional roof)
Shock resistance	IK09 (housing)
MCBF (mean cycles between failures)	2 millions, when respecting recommended maintenance
CE	Conforms to European norms

STANDARD DIMENSIONS (mm)

Surf. : 2,55 m²

Illustrated model: RevLock 600 + optional collapsing obstacles
(=> presence of the central column)



OPTIONS

1. Collapsing mobile obstacle.
2. Manual lock for 1 mobile obstacle.
3. Housing other RAL paint or flat finish paint.
4. Housing 304L stainless steel (brushed or mirror polished).
5. Single presence detector (1 or 2 directions).
6. Voice messages board.
7. Intercom.
8. Access control kit (1 or 2 directions).
9. Entry and/or exit motion detector for opening.
10. Kit for TCP/IP communication with the remote console.
11. External pushbutton for emergency unlocking.
12. Heater for operation down to -20°C.
13. Waterproof IP33 roof (half or complete).
14. 12/13 mm BR1/S P2A laminated glasses for obstacles and doors.
15. 20/21 mm BR2/S P6B laminated glasses for obstacles and doors.
16. Milky glass finish.
17. Adaptation for UL power supply 230/110 VAC.
18. Free height passage 2300 mm.
19. Manual sliding door for non-secured area side (outside the site).
20. Double external sliding doors, manual or motorized for non-secured area side (outside the site).
21. Function pictograms: red and green LEDs.
22. Electronics in separate cabinet.

WORK TO BE PROVIDED (NOT SUPPLIED)

(refer to the installation drawing CH 7791)

- Fixation to the floor.
- Power supply.
- Connection wire towards access control device.

